



TACT SWITCH

P/N: TSW06160-H

WATERPROOF

SPECIFICATIONS

Function: Momentary action
 Contact Arrangement: SPST, Normally Open
 Termination: THD version

Mechanical

Actuation Force: 230±50grams
 Life Expectancy: 100K Operations

Electrical

Contact Rating: 50mA @ 12V DC
 Dielectric Strength: 250V AC for 1minute
 Contact Resistance: 100mΩ Max.
 Insulation Resistance: 100MΩ Min.
 Travel: 0.3±0.1mm

Environmental

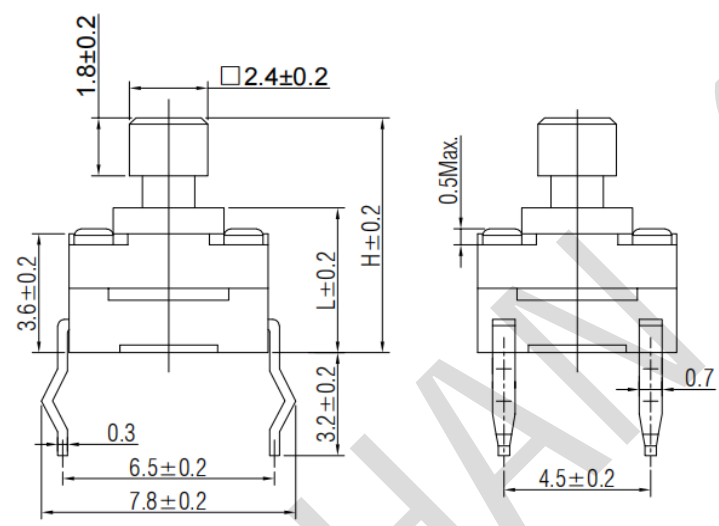
Operating Temperature: -25~+70°C
 Relative Humidity: (40°C) ≤95%

Materials

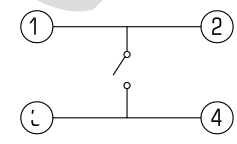
- 7.Cover: Black GP.PA66
- 6.Stem: Black GP.PA66
- 5.Washer: Rubber
- 4.Waterproof membrane: PIF membrane
- 3.Contact: Stainless Steel with Silver Cladding (4)
- 2.Holder: Black GP.PA66
- 1.Terminal: Copper (H65Y) with Silver Cladding

Packaging

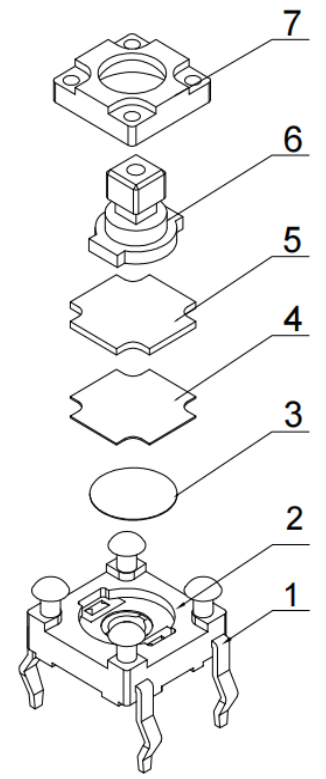
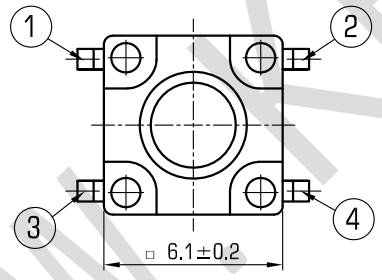
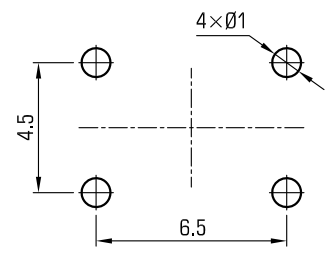
Bulk Package
 Inner Package: Plastic bag
 Outer Package: Carton



CIRCUIT DIAGRAM



P.C.B. LAYOUT



H	7	7.3	7.5
L	4.2	4.5	4.7

VERSION		PROJECTION	DESIGN	SHUQING ZHU
KH14FE22E			DRAWN	ZHONGJU PENG
SCALE	SIZE	Dimensions are shown:mm(inches) 2022.07.07	APPROVAL	JUNHUI XU
4:1	A4			