

TACT SWITCH

P/N: TSW06312

WATERPROOF



SPECIFICATIONS

Function: Momentary action
 Contact Arrangement: SPST, Normally Open
 Termination: SMD version

Mechanical

Actuation Force: 230 ± 50 grams
 Life Expectancy: 100K Operations

Electrical

Contact Rating: 50mA @ 12V DC
 Dielectric Strength: 250V AC for 1 minute
 Contact Resistance: 100mΩ Max.
 Insulation Resistance: 100MΩ Min.
 Travel: 0.3 ± 0.1 mm

Environmental

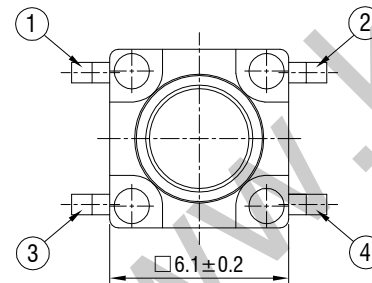
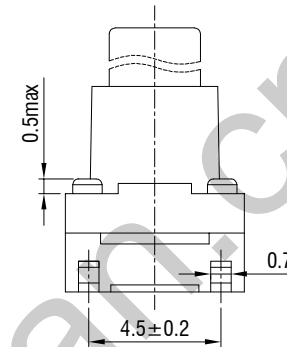
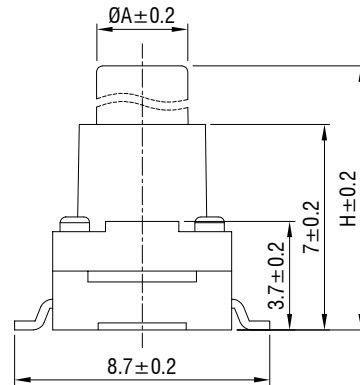
Operating Temperature: -25 ~ +70 °C
 Relative Humidity: (40 °C) ≤ 95%

Materials

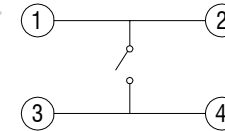
7. Cover: Brown GP.PPA
 6. Stem: Brown GP.PPA
 5. Washer: Rubber
 4. Waterproof membrane: PIF membrane
 3. Contact: Stainless Steel with Silver Cladding
 2. Holder: Brown GP.PPA
 1. Terminal: Copper with Silver Cladding

Packaging

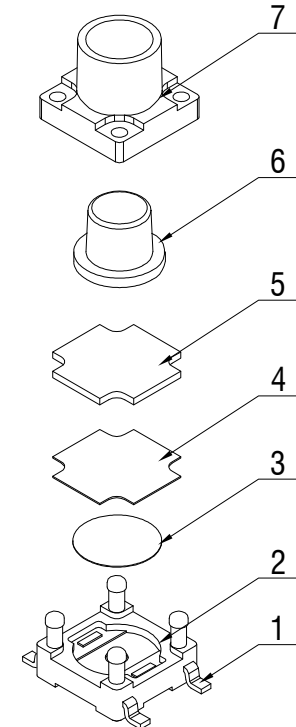
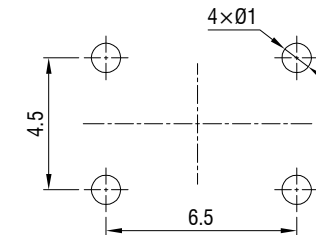
Bulk Package
 Inner Package: Plastic bag
 Outer Package: Carton



CIRCUIT DIAGRAM



P.C.B. LAYOUT



H	8	8.5	8.8	9	9.5	9.7	9.9	10
A	3.2	3.2	3.1	3.1	3.2	3.1	3.2	3.2
H	10.3	10.5	11	11.5	12	12.5	13	
A	3.2	3	3.1	3.2	3.2	3.1	3.2	



WENZHOU KHAN ELECTRONIC

VERSION

KH14FE22E

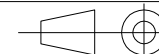
SCALE

4:1

SIZE

A4

PROJECTION



Dimensions are shown: mm (inches)

2022.02.21

DESIGN

Shuqing Zhu

DRAWN

Wei Lin

APPROVAL

Johan Xu