

TACT SWITCH

P/N: TSW06311

WATERPROOF

SPECIFICATIONS

Function: Momentary action
 Contact Arrangement: SPST, Normally Open
 Termination: SMD version

Mechanical

Actuation Force: 230±50grams
 Life Expectancy: 100K Operations

Electrical

Contact Rating: 50mA @ 12V DC
 Dielectric Strength: 250V AC for 1minute
 Contact Resistance: 100mΩ Max.
 Insulation Resistance: 100MΩ Min.
 Travel: 0.3±0.1mm

Environmental

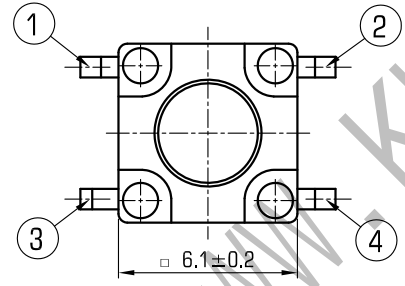
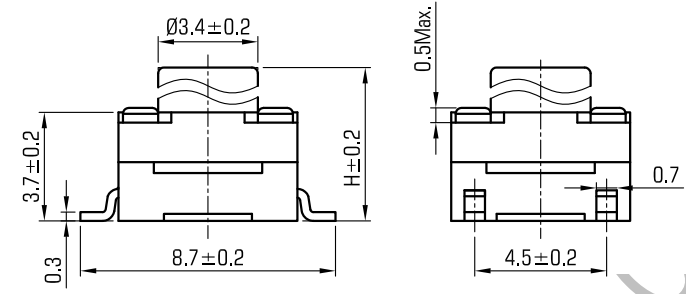
Operating Temperature: -25~+70°C
 Relative Humidity: (40°C) ≤95%

Materials

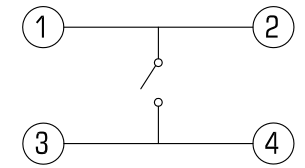
- 7.Cover: Brown GP.PPA
- 6.Stem: Brown GP.PPA
- 5.Washer: Rubber
- 4.Waterproof membrane: PIF membrane
- 3.Contact: Stainless Steel with Silver Cladding
- 2.Holder: Brown GP.PPA
- 1.Terminal: Copper with Silver Cladding

Packaging

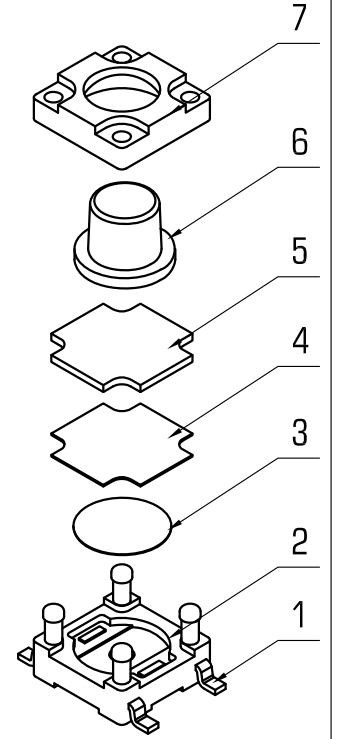
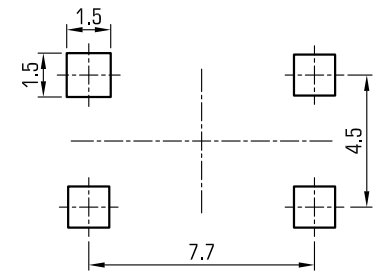
Bulk Package
 Inner Package: Plastic bag
 Outer Package: Carton



CIRCUIT DIAGRAM



P.C.B. LAYOUT



H	4.3	4.5	4.8	5	5.5	6	6.4	6.5	6.6	7	7.3
A	3.4	3.4	3.4	3.5	3.2	3.2	3	3.2	3.1	3.2	3.2
H	7.5	8	8.5	8.8	9	9.5	9.7	9.9	10	10.3	10.5
A	3.2	3.2	3.2	3.1	3.1	3.1	3.1	3.2	3.2	3.2	3



WENZHOU KHAN ELECTRONIC

VERSION		PROJECTION	DESIGN	SHUQING ZHU
KH14FE22E			CHECKED	ZHONGJU PENG
SCALE	SIZE	Dimensions are shown:mm(inches)	APPROVED	JUNHUI XU
4:1	A4		2019.11.01	