

TACT SWITCH

P/N: TSW08111-H

SPECIFICATIONS

Function: Momentary action
 Contact Arrangement: SPST, Normally Open
 Termination: THD version

Mechanical

Actuation Force:
 Life Expectancy: 100,000 Operations

Electrical

Contact Rating: 50mA @ 12V DC
 Dielectric Strength: 250V AC for 1minute
 Contact Resistance: 100mΩ Max.
 Insulation Resistance: 100MΩ Min.
 Travel: 0.30±0.1mm

Environmental

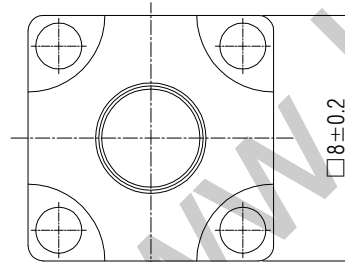
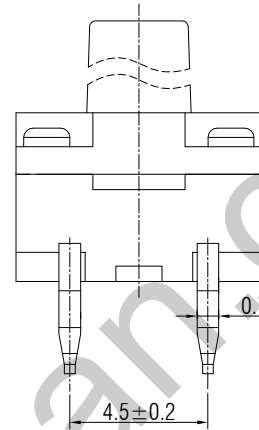
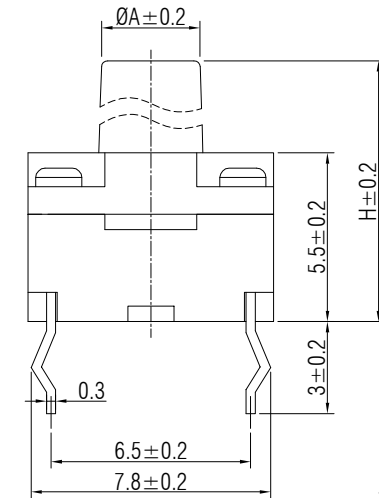
Operating Temperature: -25~+70℃
 Relative Humidity: (40℃) ≤95%

Materials

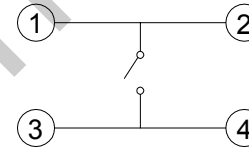
8.Cover: Black GP.PA66
 7.Stem: Rubber
 6.Washer: Rubber
 5.Waterproof membrane: PIF membrane
 4.Inner Stem: Black GP.PA66
 3.Contact:
 2.Holder: Black GP.PA66
 1.Terminal: Copper with Silver Cladding

Packaging

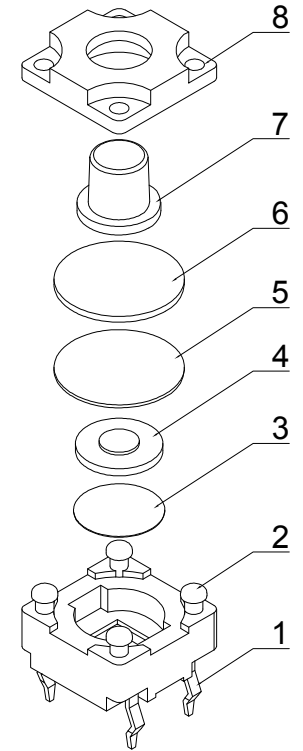
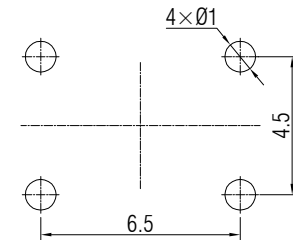
Bulk Package
 Inner Package: Plastic bag
 Outer Package: Carton



CIRCUIT DIAGRAM



P.C.B. LAYOUT



H	6	6.3	6.5	7	7.5	7.9	8	8.1	8.5	8.8	9	9.5
A	3.4	3.4	3.4	3.2	3.2	3	3.2	3.1	3.2	3.2	3.2	3.2
H	10	10.3	10.5	11	11.2	11.4	11.5	11.8	12	12.5	13	13.5
A	3.2	3.1	3.1	3.1	3.1	3.2	3.2	3.2	3.2	3.1	3.2	3.2
H	14	14.5	15	15.5	16							
A	3.1	3.2	3	3.2	3.1							



WENZHOU KHAN ELECTRONIC

VERSION		PROJECTION	DESIGN	ZhongJu Peng
KH14FE22E			DRAWN	Wei Lin
SCALE	SIZE	Dimensions are shown:mm(inches) 2022.05.11	APPROVAL	Johan Xu
5:1	A4			