

TACT SWITCH

P/N:TSW08111-0030H



SPECIFICATIONS

Function: Momentary action
 Contact Arrangement: SPST, Normally Open
 Termination: THD version

Mechanical

Actuation Force:
 Life Expectancy: 100,000 Operations

Electrical

Contact Rating: 50mA @ 12V DC
 Dielectric Strength: 250V AC for 1minute
 Contact Resistance: 100mΩ Max.
 Insulation Resistance: 100MΩ Min.
 Travel: 0.30±0.1mm

Environmental

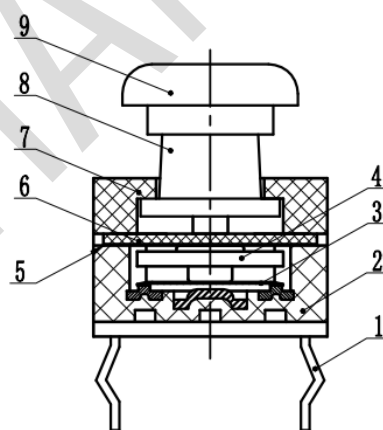
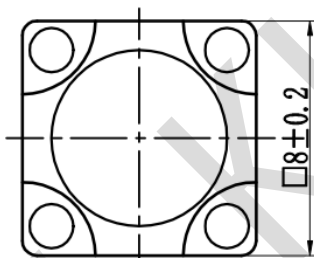
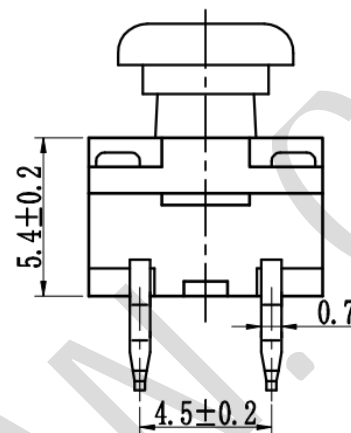
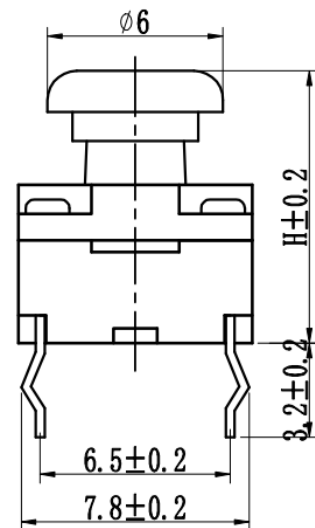
Operating Temperature: -25~+70℃
 Relative Humidity: (40℃)≤95%

Materials

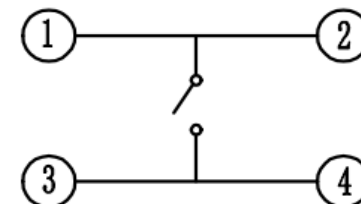
- 9.Cap: White GP.PC
- 8.Cover: Black GP.PA66
- 7.Stem: Black GP.PA66
- 6.Washer: Rubber
- 5.Waterproof membrane: PIF membrane
- 4.Inner Stem: Black GP.PA66
- 3.Contact: Stainless Steel with Silver Cladding
- 2.Holder: Black GP.PA66
- 1.Terminal: Copper with Silver Cladding

Packaging

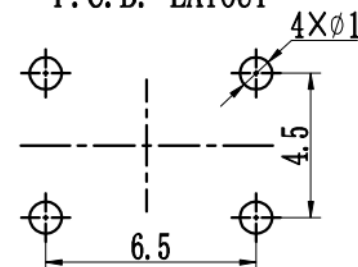
Bulk Package: Plastic bag
 Inner Package: Carton
 Outer Package: Carton



CIRCUIT DIAGRAM



P. C. B. LAYOUT



H	9	9.1	9.5	9.8	10	10.5	11	11.3	11.5	12	12.2
H	12.4	12.5	12.8	13	13.5	14	14.5	15	15.5	16	16.5



WENZHOU KHAN ELECTRONIC

VERSION

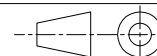
KH14FE22E

SCALE SIZE

5:1

A4

PROJECTION



Dimensions are shown:mm(inches)

2022.05.11

DESIGN

ZhongJu Peng

DRAWN

Wei Lin

APPROVAL

Johan Xu