



TACT SWITCH

P/N:TSA12110-001020



SPECIFICATIONS

Function: Momentary action
 Contact Arrangement: SPST, Normally Open
 Termination: SMD version

Mechanical

Actuation Force: 280±50grams
 Life Expectancy: 100,000 Operations

Electrical

Contact Rating: 50mA @ 12V DC
 Dielectric Strength: 250V AC for 1minute
 Contact Resistance: 100mΩ Max.
 Insulation Resistance: 100MΩ Min.
 Travel: 0.3±0.1mm

Environmental

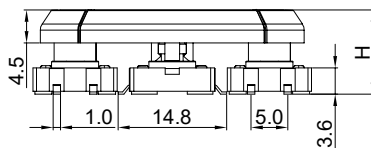
Operating Temperature: -25~+70°C
 Relative Humidity: (40°C) ≤70%

Materials

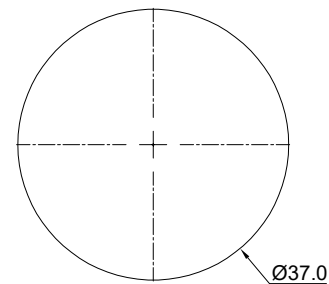
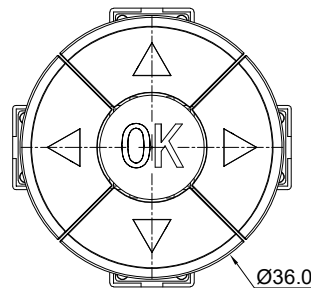
6.Cap: Black GP.ABS
 5.Cover: Ferrum with Nickelplate
 4.Stem: Black GP.PA66
 3.Contact: Stainless Steel with Silver cladding
 2.Holder: Black GP.PA66
 1.Terminal: Copper with Silver Cladding

Packaging

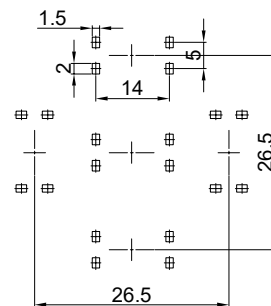
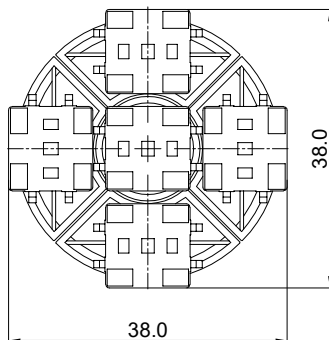
Bulk Package
 Inner Package: Plastic bag
 Outer Package: Carton



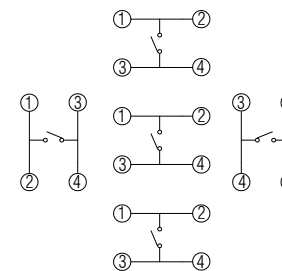
可定制符号



FACE OPENING SIZE



P.C.B. LAYOUT



CIRCUIT DIAGRAM

H	11.5	11.8	11.9
---	------	------	------

KHON® WENZHOU KHAN ELECTRONIC

VERSION		PROJECTION	DESIGN	Shuqing Zhu
KH14FE22E			DRAWN	Zhongju Peng
SCALE	SIZE	Dimensions are shown:mm(inches)	APPROVAL	Johan Xu
3:1	A4		2020.06.27	